

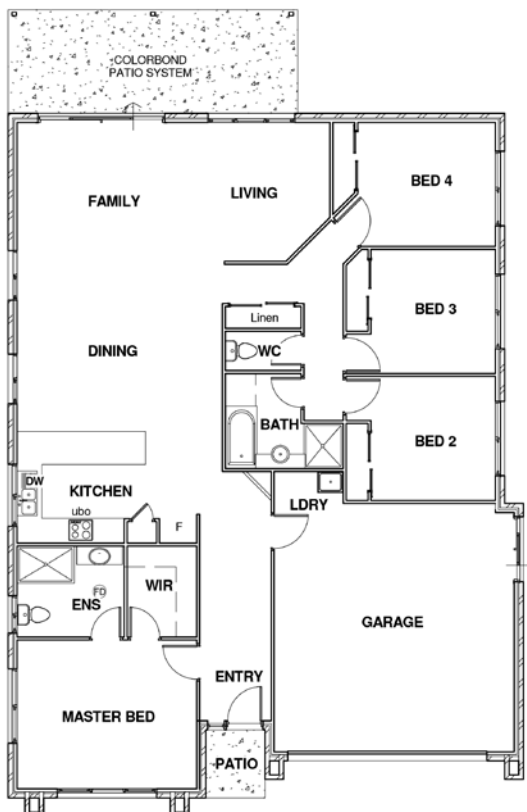
213.68 m<sup>2</sup> / 23 sq

# HANSEN



*House illustration is an artists impression only*

A versatile design encompassing modern features with true value...



## FEATURES:

- 4 Bedroom with built-in-ropes
- Tiled entrance
- Open plan Family, Living & Dining rooms
- Outdoor alfresco pergola area
- Well appointed kitchen with stainless steel appliances and breakfast bar
- Master bedroom with ensuite and walk-in-robe
- Double lock-up garage with internal entry.