

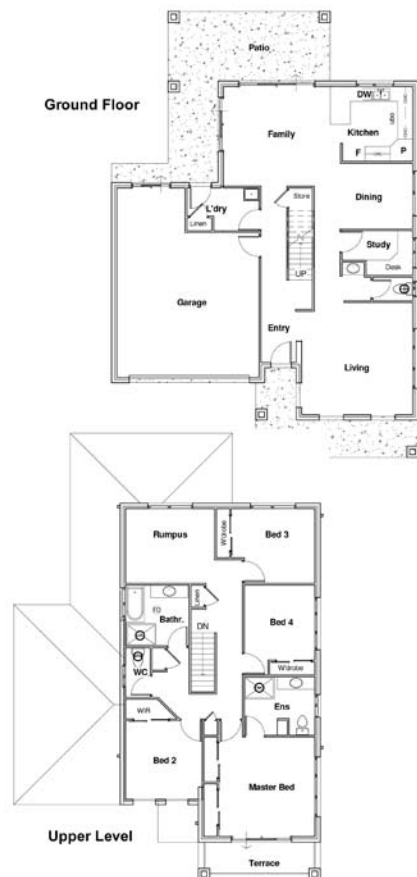
285.93 m² / 30.77 sq

NEWINGTON



House illustration is an artists impression only.

A 2 storey contemporary design featuring everything for the modern family...



FEATURES:

- 4 Bedrooms with B.I.R's
- Study with built-in desk
- Spacious separate Living room
- Rumpus room (upstairs)
- Powder room (downstairs)
- Portico entry to tiled entrance
- Open plan Family room leading to outdoor patio area
- Well appointed kitchen with breakfast bar and modern stainless steel appliances
- Master bedroom with ensuite, walk-in-robe and outdoor deck
- Double lock-up garage with internal entry.